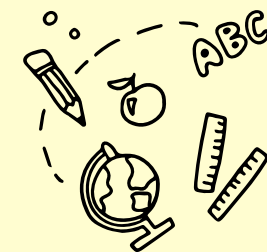




# Summary Inspection Report

## Edna M. Moyle Primary School



### SCHOOL INFORMATION

<b>Inspection Dates</b>	07 to 09 October, 2024		
<b>Principal</b>	Ms. Dairdie Tingle		
<b>Age Range of Students</b>	4 - 11 Years	<b>Number of Students on Roll</b>	87
<b>Number of Caymanian Students</b>	76	<b>Number of Students with ALSN &amp; SEND</b>	23
<b>Number of Teaching Staff</b>	12	<b>Number of Support Staff</b>	9

### WHAT THE SCHOOL DOES WELL

- The effective and inspirational leadership of the principal in sustaining the inclusive ethos and common sense of purpose, and in driving improvements.
- The school had established excellent links with parents and the community.
- The good progress students were making in English, mathematics and science.
- Students' positive attitudes and strong learning skills.
- The quality of teaching that fostered a positive learning environment, including clear learning intentions and strong student engagement, which contributed to good progress across the core subjects.
- The cohesive structure of the curriculum that helped ensure continuity in students' learning as they advance through the school.
- Attention to students' health and safety, and their care and support.

### OVERALL JUDGEMENT



**Good**

### AREAS FOR DEVELOPMENT

- Improve students' attainment in English by promoting further development of reading for pleasure to enhance vocabulary and extending their in-depth writing skills.
- Improve assessment by:
  - increasing teachers' expertise in using assessment information to plan lessons that meet the needs of all students;
  - developing teachers' confidence in modifying strategies during lessons, as students' knowledge, understanding and skills emerge.
- Further develop students' independent learning skills by:
  - providing more opportunities for students to tackle problems without initial adult support;
  - encouraging students to take the initiative in pursuing lesson objectives and deciding how to demonstrate their understanding.

**Excellent**

Exceptionally high quality of performance or practice

**Good**

The expected level for every school in the Cayman Islands, both government and private

**Satisfactory**

The minimum level of quality required for the Cayman Islands. All key aspects of performance and practice in every school should meet or exceed this level.

**Weak**

Quality not yet at the level acceptable for schools in the Cayman Islands. Schools will be expected to take urgent measures to improve the quality of any aspect of their performance or practice judged at this level.



# INSPECTION FINDINGS

Quality Indicator		Early Childhood Judgement	Change
Cognitive development	1.2 Progress	Good	N/A
Social Emotional development	1.1 Attainment	Good	N/A
	1.2 Progress	Good	N/A
Communication and Language development	1.1 Attainment	Good	N/A
	1.2 Progress	Good	N/A
Physical development	1.1 Attainment	Good	N/A
	1.2 Progress	Good	N/A

Quality Indicator		Primary Judgement	Change
English	1.1 Attainment	Satisfactory	→
	1.2 Progress	Good	↑
Mathematics	1.1 Attainment	Good	↑
	1.2 Progress	Good	→
Science	1.1 Attainment	Good	↑
	1.2 Progress	Good	↑

Quality Indicator	Early Childhood Judgement	Change	Primary Judgement	Change
2.1 Social emotional learning/Positive behaviour	Good	→	Good	→
2.2 Civic and environmental understanding	Good	→	Good	→
3.1 Teaching	Good	→	Good	↑
3.2 Learning	Good	→	Good	↑
3.3 Assessment	Good	→	Satisfactory	→
4.1 Curriculum quality	Good	→	Good	↑
5.1 Health and safety	Good	→	Good	→
5.2 Support and guidance	Good	→	Good	→
6.1 Leadership	Whole School Judgement: Excellent		Change: ↑	
6.2 Self-evaluation and improvement planning	Whole School Judgement: Good		Change: ↑	
6.3 Links with parents and the community	Whole School Judgement: Excellent		Change: ↑	
6.4 Staffing and the learning environment	Whole School Judgement: Good		Change: →	

Click **HERE** to access the full inspection report for this school or visit [www.oes.gov.ky](http://www.oes.gov.ky).