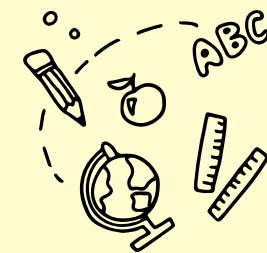




Summary Inspection Report

Joanna Clarke Primary School



SCHOOL INFORMATION

Inspection Dates	12 to 14 November, 2024		
Principal	Mr. Delton Pedley		
Age Range of Students	4 - 11 Years	Number of Students on Roll	461
Number of Caymanian Students	454	Number of Students with ALSN & SEND	26
Number of Teaching Staff	22	Number of Support Staff	21

WHAT THE SCHOOL DOES WELL

- Reception classes provided children with a good start to their education
- Assessment and records in Early Childhood showed that children achieved well across the four domains.
- Students behaved well, were keen to learn and were polite and courteous to their teachers, other adults and visitors.
- Most students displayed a good understanding and appreciation of Caymanian culture and traditions.
- The wide range of extra-curricular activities and additional planned opportunities extended students' learning and interest.
- The school benefitted from strong links with parents and the local community.

OVERALL JUDGEMENT

Satisfactory

AREAS FOR DEVELOPMENT

- **Improve students' attainment and progress, particularly in English and mathematics, by:**
 - ensuring that teachers use assessment information to plan more challenging work to match the needs of all students;
 - adjusting tasks, in real-time within the classroom to provide more challenging work for students who complete assignments easily, to accelerate their progress;
 - teaching and preparing students more rigorously for external tests including phonics and National Curriculum Year 6 tests in reading and mathematics.
- **Improve the quality of teaching by:**
 - holding teachers to account more rigorously when their expectations of students are not high enough;
 - checking teachers' planning to ensure high levels of challenge for all students, but particularly for the most able;
 - embedding the use of modelling and use of success criteria, so students are more fully aware of what success looks like;
 - providing high quality professional development for teachers whose practice is not yet good.

Excellent

Exceptionally high quality of performance or practice

Good

The expected level for every school in the Cayman Islands, both government and private

Satisfactory

The minimum level of quality required for the Cayman Islands. All key aspects of performance and practice in every school should meet or exceed this level.

Weak

Quality not yet at the level acceptable for schools in the Cayman Islands. Schools will be expected to take urgent measures to improve the quality of any aspect of their performance or practice judged at this level.



INSPECTION FINDINGS

Quality Indicator		Early Childhood Judgement	Change	Quality Indicator		Primary Judgement	Change
Cognitive development	1.1 Attainment	Good	N/A	English	1.1 Attainment	Weak	→
	1.2 Progress	Good	N/A		1.2 Progress	Satisfactory	→
Social Emotional development	1.1 Attainment	Good	N/A	Mathematics	1.1 Attainment	Weak	→
	1.2 Progress	Good	N/A		1.2 Progress	Satisfactory	→
Communication and Language development	1.1 Attainment	Good	N/A	Science	1.1 Attainment	Satisfactory	↑
	1.2 Progress	Good	N/A		1.2 Progress	Satisfactory	→
Physical development	1.1 Attainment	Good	N/A				
	1.2 Progress	Good	N/A				

Quality Indicator	Early Childhood Judgement	Change	Primary Judgement	Change
2.1 Social emotional learning/Positive behaviour	Good	→	Good	↑
2.2 Civic and environmental understanding	Good	→	Good	→
3.1 Teaching	Good	→	Satisfactory	→
3.2 Learning	Good	→	Satisfactory	→
3.3 Assessment	Good	↑	Satisfactory	→
4.1 Curriculum quality	Good	→	Good	→
5.1 Health and safety	Good	→	Satisfactory	↓
5.2 Support and guidance	Good	↑	Satisfactory	→
6.1 Leadership	Whole School Judgement: Satisfactory Change: →			
6.2 Self-evaluation and improvement planning	Whole School Judgement: Satisfactory Change: →			
6.3 Links with parents and the community	Whole School Judgement: Good Change: →			
6.4 Staffing and the learning environment	Whole School Judgement: Satisfactory Change: →			

Click **HERE** to access the full inspection report for this school or visit www.oes.gov.ky.