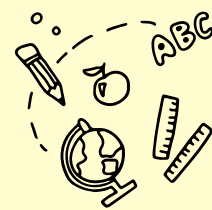




Interim School Audit Summary

Montessori del Sol



Only schools that have received two consecutive judgements of good /or excellent quality for an interim audit.

INFORMATION

An Interim School Audit is a risk-based approach designed to evaluate school provision, with the aim of accelerating progress and raising standards in our schools. This type of inspection is less intrusive than a full inspection but remains robust enough to assess the quality of educational provision.

Audit Dates	10 - 11 February, 2025	Age range	18 months - 5 years & 10 months
Owner/Director	Ms. Amy Lipton	Number of Students on Roll	59
Number of Caymanian students	33	Number of Students with ALSN & SEND	13
Number of Teaching Staff	5	Number of Support Staff	4



NEXT STEPS

- Continue enhancing tools and processes to empower the new leadership team in further strengthening provision.
- Further refine the School Improvement Plan by incorporating defined timelines and success criteria to facilitate effective monitoring and evaluation.
- Continue efforts to ensure consistently high-quality teaching across all contexts within the setting.
- Continue to improve the assessment process to enhance efficiency and accuracy in progress monitoring.



MAIN FINDINGS & KEY STRENGTHS

Leadership

- Leadership continued to have a positive impact on children’s outcomes, consistently ensuring good attainment and progress in the early learning goals. Children with Learning Support Plans (LSPs) were also monitored to ensure they made good progress against their LSP targets.
- The setting was inclusive, with a diverse group of children, including those from varied backgrounds and with different needs.
- Staff development and well-being were strengths of leadership, with informed, targeted professional development based on robust teacher observations, feedback from teachers and data analysis. The International Montessori Council (IMC) supported the centre in aspects of planning and development.

Teaching

- All early childhood staff had a secure understanding of how young children learn and supported all learners effectively to make good progress. The Montessori method effectively fostered independence and self-awareness among learners.
- The environment was expertly structured and organised, with a range of resources supporting learning and curiosity. The outdoor areas remained a strength, where rich outdoor experiences contributed to development in all areas.
- Adult-child interactions were highly positive, nurturing and supportive. Staff intentionally modelled language for children and provided appropriate challenges for all learners.

Curriculum

- The curriculum remained broad and balanced, with an appropriate progression of skills across the developmental domains.
- The curriculum was activity-based, enabling children to explore and develop as they completed work cycles.
- All children were catered for as individual learners, receiving support and challenge according to their specific needs.

Health and Safety

- The setting was secure, clean and well organised and all regulatory requirements were met.
- All rooms adhered to the required space and adult-child ratios and children were vigilantly supervised.
- Child safeguarding was a priority at Montessori del Sol, with all staff meeting the requirements for Child Protection and CPR training.
- All parents expressed that their children were safe and well supported, as reflected in the parent survey results.



SUMMARY OF INSPECTION JUDGEMENTS FROM LAST FULL INSPECTION (21 - 22 NOVEMBER, 2022)

Quality Indicator		Judgement
1.1	Exploration	Excellent
1.2		
1.1	Respect	Good
1.2		
1.1	Communication	Excellent
1.2		
1.1	Well-Being	Excellent
1.2		
3.1	Teaching	Good
3.2	Learning	Good
3.3	Assessment	Good
4.	Curriculum	Good
5.1	Health and safety	Excellent
5.2	Support and guidance	Good
6.1	Leadership	Good
6.2	Self-evaluation and improvement planning	Good
6.3	Links with parents and the community	Excellent
6.4	Staffing and the learning environment	Excellent



Click **[HERE](#)** to access the full letter for the interim school audit or visit www.oes.gov.ky.

